



THE CHICAGO



peapod-homes.com
info@peapod-homes.com

Copyright 2022 Peapod Homes

DESIGN FEATURES

KITCHEN

- ◆ Stainless steel gas range, range hood, refrigerator, dishwasher, & wine fridge
- ◆ Quartz countertops
- ◆ Stainless steel deep bowl single basin undermount farmhouse sink
- ◆ Stainless steel pot filler
- ◆ Large center island
- ◆ Chrome gooseneck pull-out faucet
- ◆ Custom shaker hardwood cabinets; full extension, dovetail construction, and quiet close

FIRST FLOOR

- ◆ Dining room with window seat bump-out
- ◆ Great room with custom fireplace and built-ins
- ◆ Custom open staircase
- ◆ Walk-in pantry room with ample storage
- ◆ Mudroom with ample storage
- ◆ Butler's pantry/study nook with wine fridge
- ◆ Guest bedroom/home office with ample closet

SECOND FLOOR

- ◆ Spacious owner's retreat with ensuite bathroom and dual closets, including a huge walk-in closet with built-in shoe station
- ◆ Well-sized second and third bedroom with ample closets
- ◆ Guest bathroom with ample closets
- ◆ Linen closets & numerous other interior closets
- ◆ Large laundry room with sink, butcher block counter, and custom cabinets

ATTIC

- ◆ Finished attic space with fourth bedroom and bathroom
- ◆ Permanent staircase access

BATHROOMS

- ◆ Quartz countertops
- ◆ Large standalone soaking tub in master bath
- ◆ Double vanity with porcelain vessel sinks
- ◆ Stand up showers with rainfall shower head
- ◆ Toilet closets

EXTERIOR

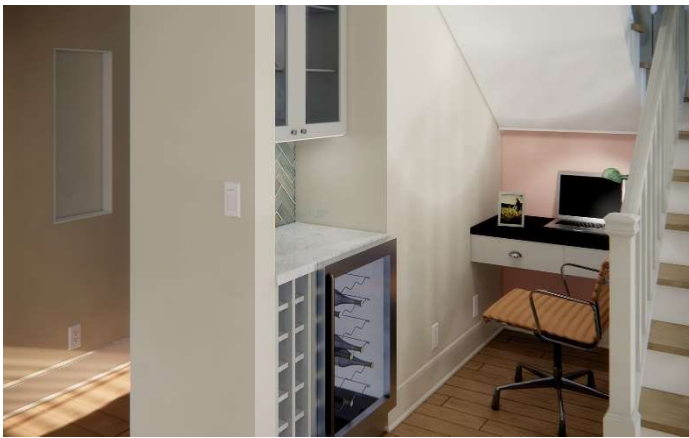
- ◆ Composite siding
- ◆ Attractive 35-year dimensional roof shingles
- ◆ 6' wrap-around privacy fence with access gate
- ◆ Garage with storage space
- ◆ Two-car walk-out back deck
- ◆ Sod landscaping

INTERIOR

- ◆ 9' ceilings on first & second floor
- ◆ Engineered hardwood flooring on first floor
- ◆ Plush carpeting on second floor

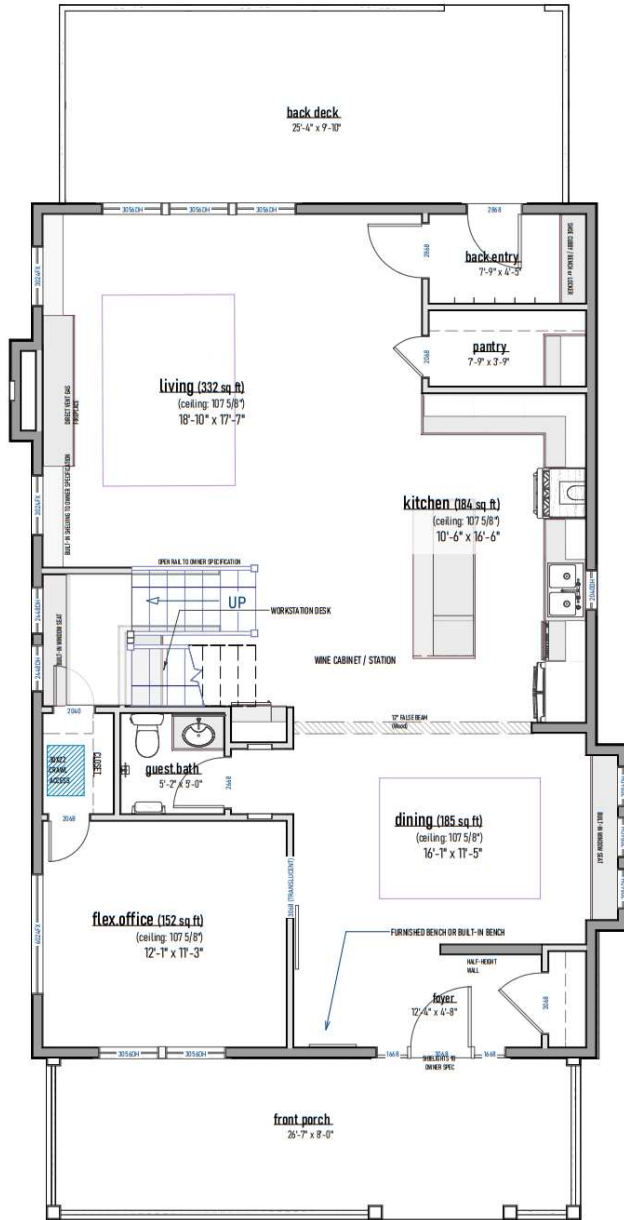
CONSTRUCTION

- ◆ Energy efficient construction
- ◆ High efficiency HVAC and A/C
- ◆ Energy Star rated insulation
- ◆ Home warranties provided
- ◆ Manufacturers' limited warranties included
- ◆ 200 AMP service
- ◆ Basement options available

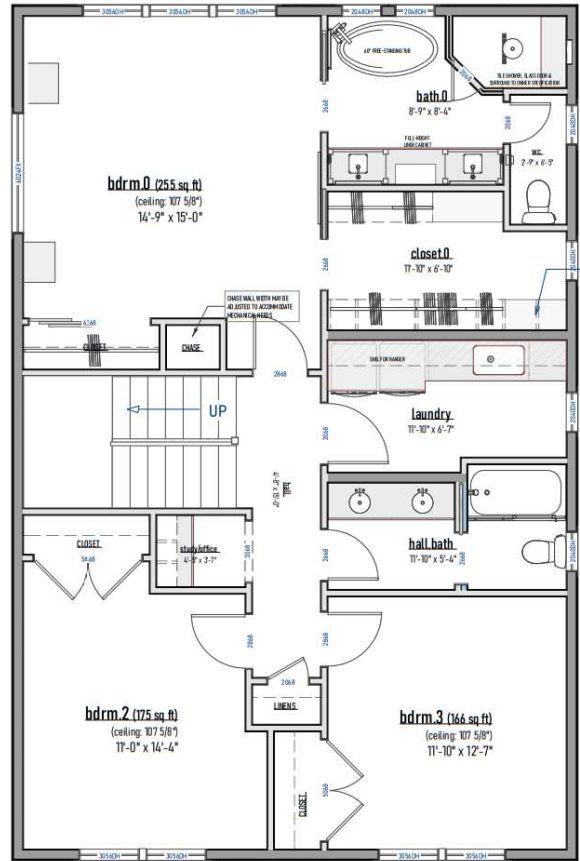


FLOORPLAN

- ◆ Floorplan includes finished attic with fourth bedroom and bathroom
- ◆ Basement options available



FIRST FLOOR



SECOND FLOOR